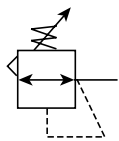
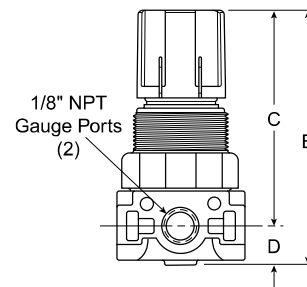
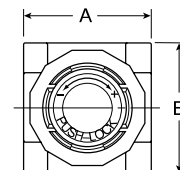


R24, R25 Regulators – Miniature (Air / Water Service)



Features

- Lightweight plastic body
- Constructed with a combination of N.S.F. and F.D.A. approved materials
- Unbalanced poppet standard
- Non-rising, push-to-lock adjusting knob
- Compact, 3.10 inch (79mm) high by 1.60 inch (41mm) wide
- Lightweight
- Diaphragm operated



Port Size	NPT	
	Air Service Relieving	Water Service Non-Relieving
	Relieving, 0-125 Reduced Pressure, Without Gauge	
1/8"	R25-01C	R24-01CK
1/4"	R25-02C	R24-02CK

Bold Items are Most Popular.

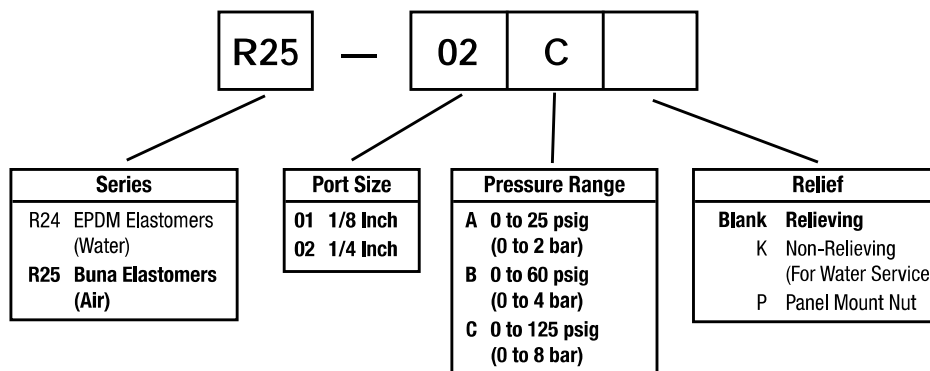
For other models refer to ordering information below.

NOTE: 1.250 Dia. (31.8mm) hole required for panel mounting.

R24, R25 Regulator Dimensions		
A	B	C
1.60 (41)	1.60 (41)	2.61 (66)
D	E	
0.49 (13)	3.10 (79)	

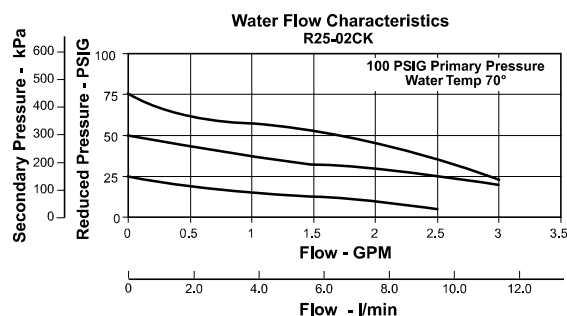
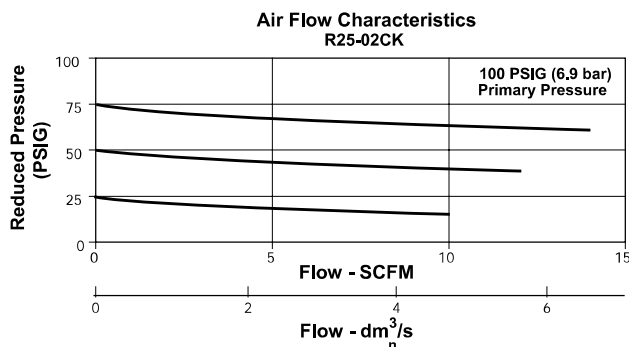
Inches (mm)

Ordering Information



BOLD ITEMS ARE MOST POPULAR.

Technical Information

**⚠ WARNING**

Product rupture can cause serious injury.
Do not connect regulator to bottled gas.
Do not exceed maximum primary pressure rating.

⚠ CAUTION:

REGULATOR PRESSURE ADJUSTMENT – The working range of knob adjustment is designed to permit outlet pressures within their full range. Pressure adjustment beyond this range is also possible because the knob is not a limiting device. This is a common characteristic of most industrial regulators, and limiting devices may be obtained only by special design. For best performance, regulated pressure should always be set by increasing the pressure up to the desired setting.

R24, R25 Regulator Kits and Accessories

Panel Mount Nut –

Plastic	R05X51-P
Aluminum	R05X51-A

Mounting Bracket and Nut SA161X57

Service Kits –

Relieving (Buna)	RKR25Y
Non-Relieving (Buna)	RKR25KY
Relieving (EPDM)	RKR24Y
Non-Relieving (EPDM)	RKR24KY

Springs –

0-25 psig Spring	SPR-375-1
0-60 psig Spring	SPR-376
0-125 psig Spring	SPR-377

Specifications

Gauge Ports (2) 1/8 Inch
(Can be used for full flow)

Pressure Rating – Maximum Inlet Pressure 150 psig.....(10.0 bar)

Port Threads 1/8, 1/4 Inch

Temperature Rating 40°F to 125°F (4°C to 52°C)

Weight 0.25 lb. (0.11 kg)

Materials of Construction

Adjusting Screw	Steel
Body	Acetal
Bonnet and Seat	Acetal
Diaphragm (R25)	Buna N
Diaphragm (R24)	EPDM
Seals (R25)	Buna N
Seals (R24)	EPDM
Springs	Stainless Steel
Valve Poppet (R25)	Buna N
Valve Poppet (R24)	EPDM